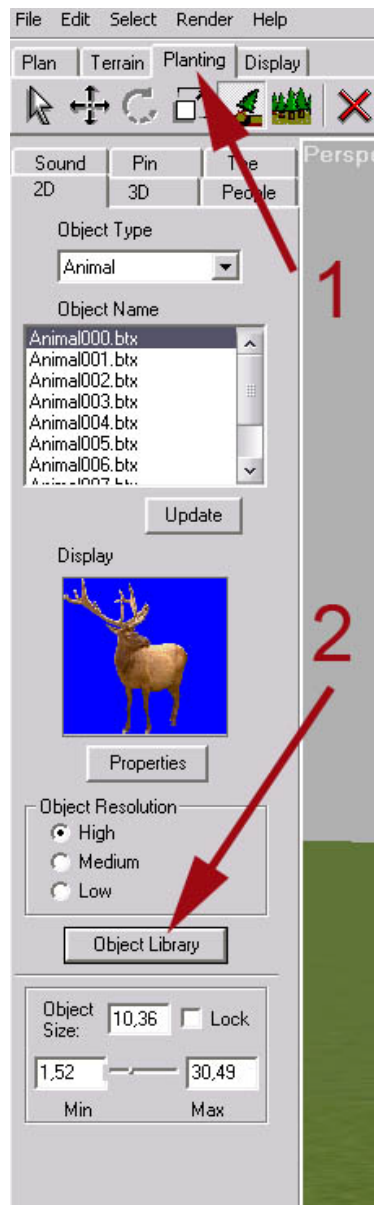


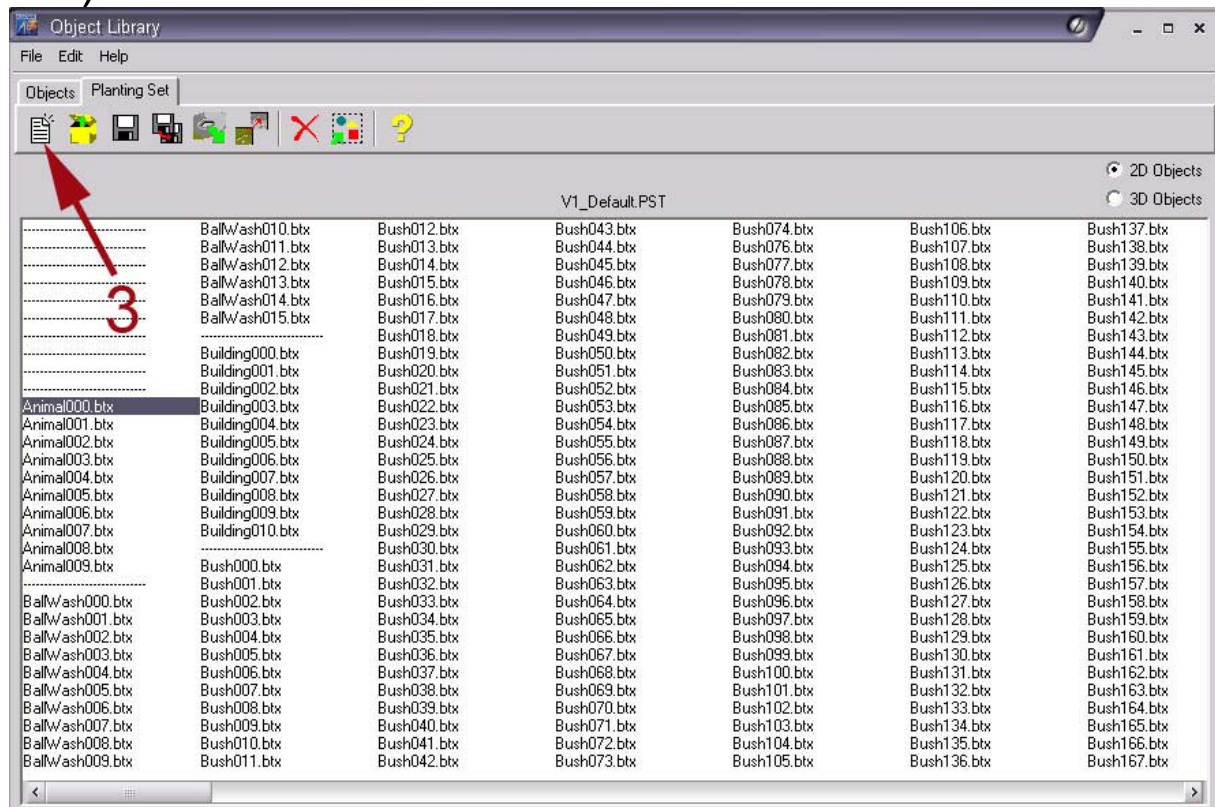
Importing Objects from a Course

Open APCD

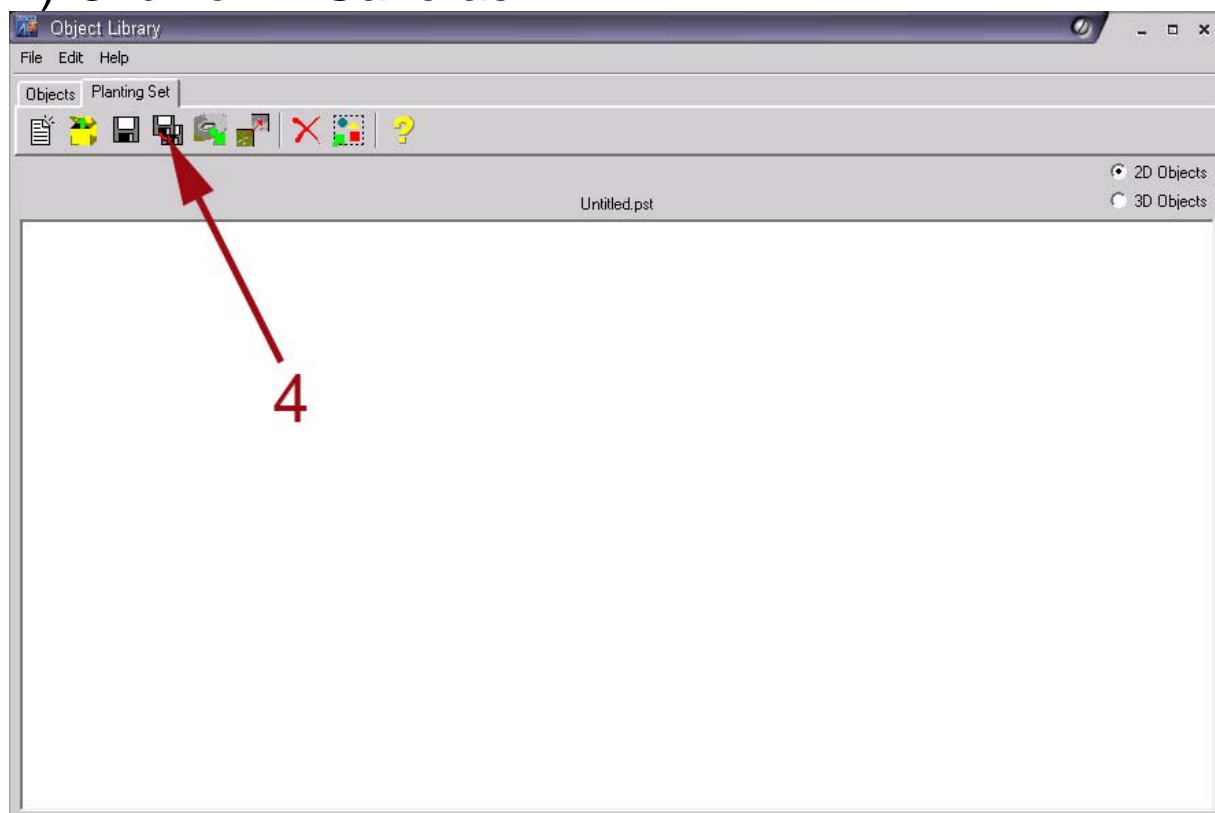
- 1) Click on « Planting »
- 2) Click on « Object Library »



3) In the new window, click on « New » (planting set)

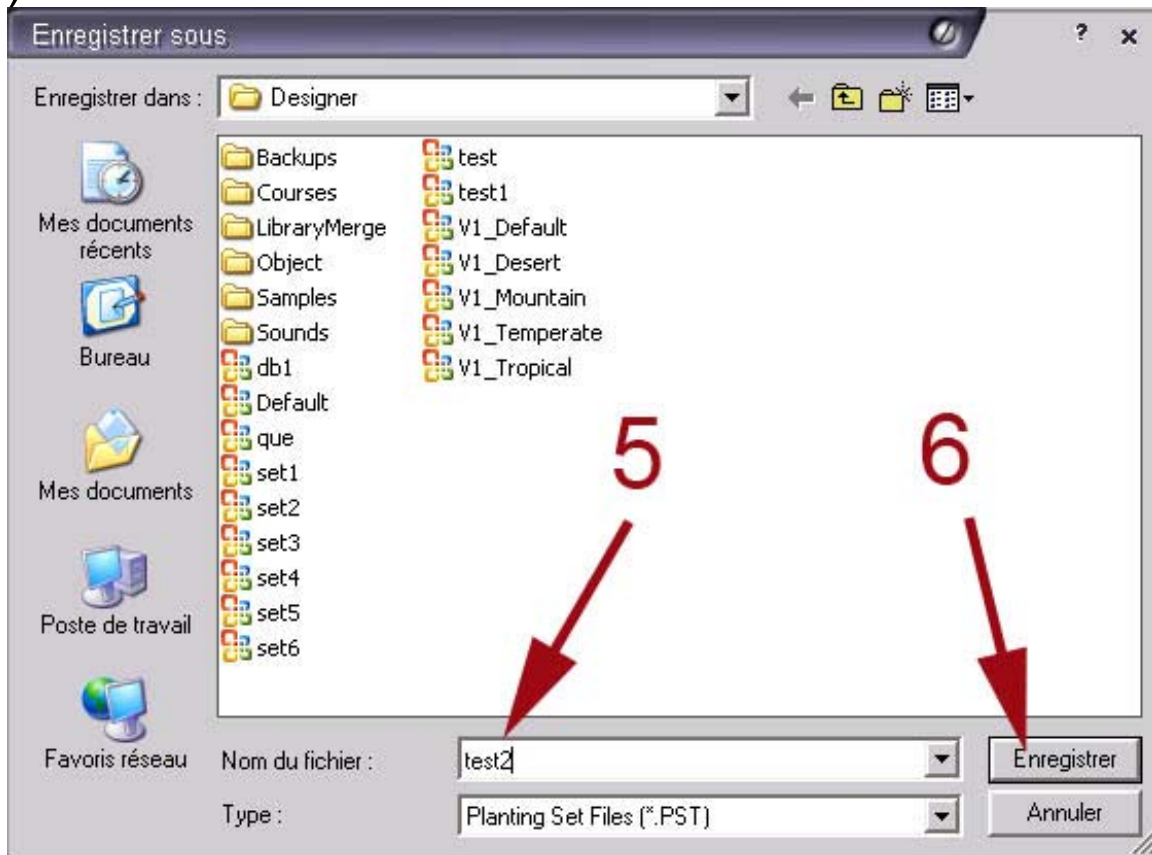


4) Click on « Save as »



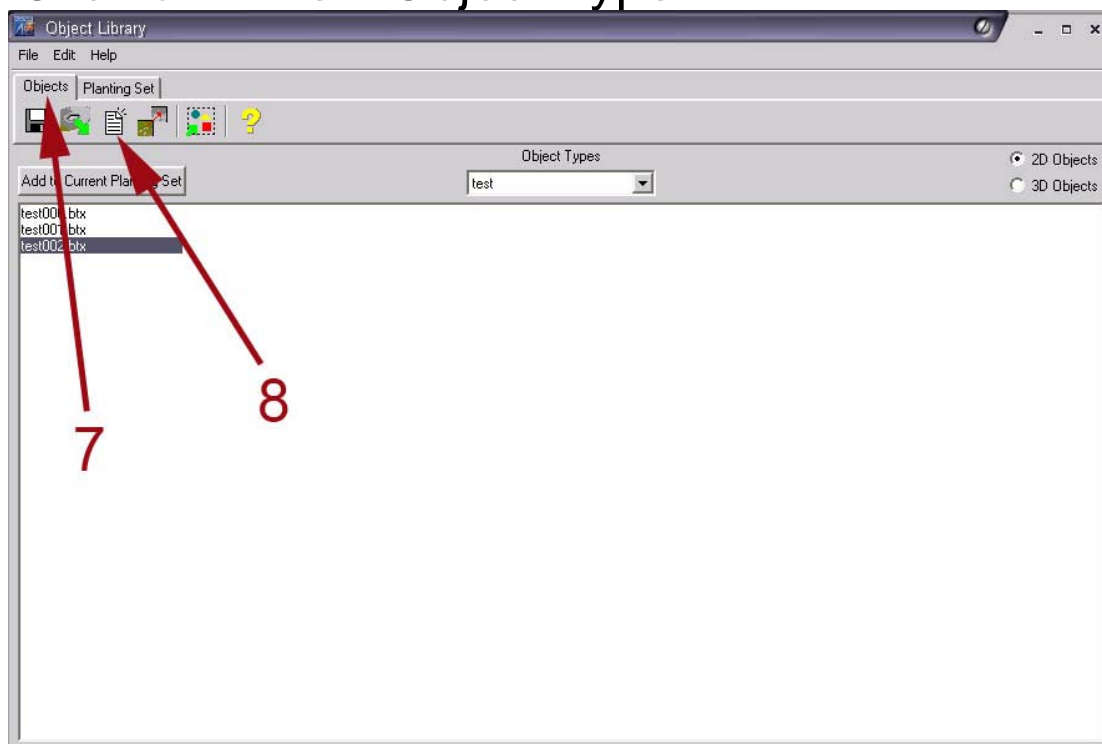
5) Enter the name of the planting set

6) Save

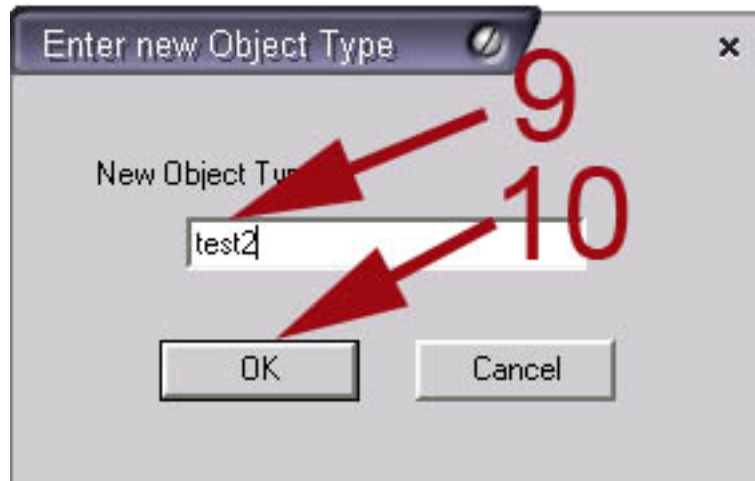


7) Click on « Objects »

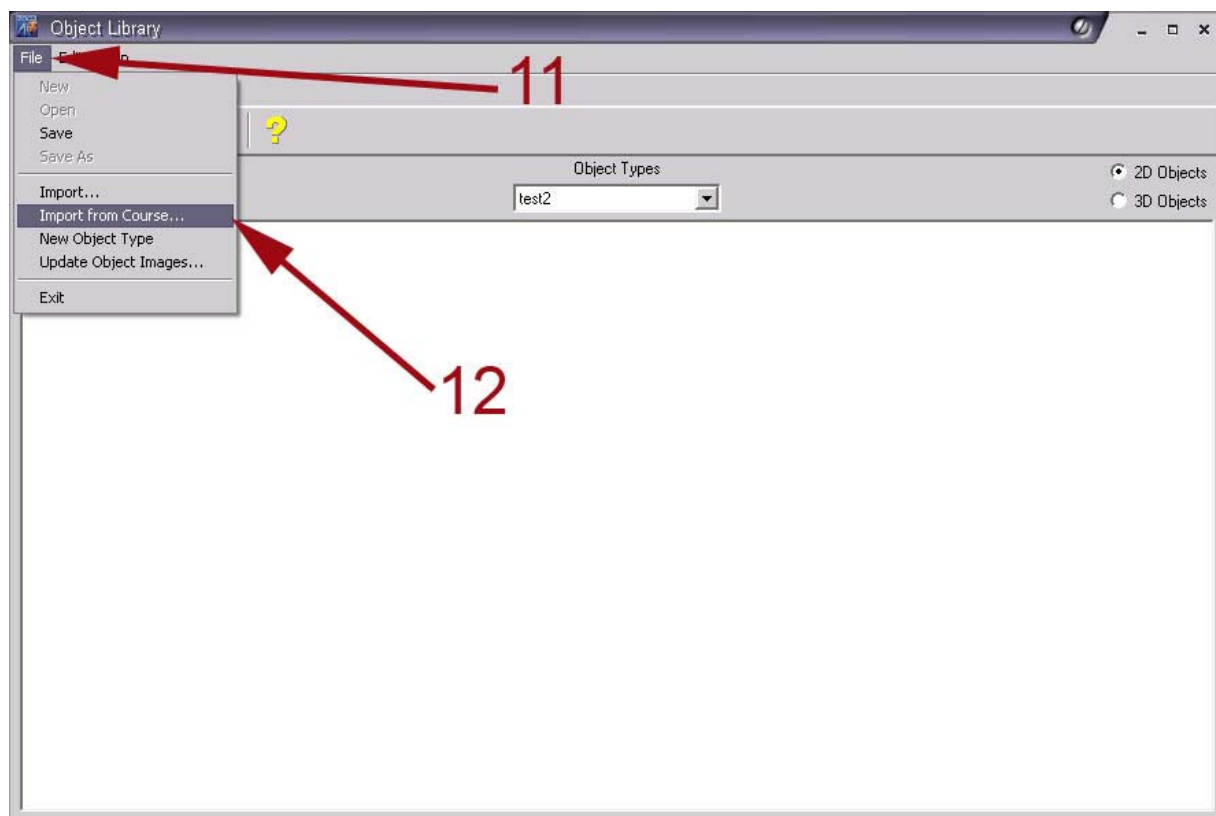
8) Click on « New Object Type »



- 9) In the new window, enter the name of your new object type
- 10) OK

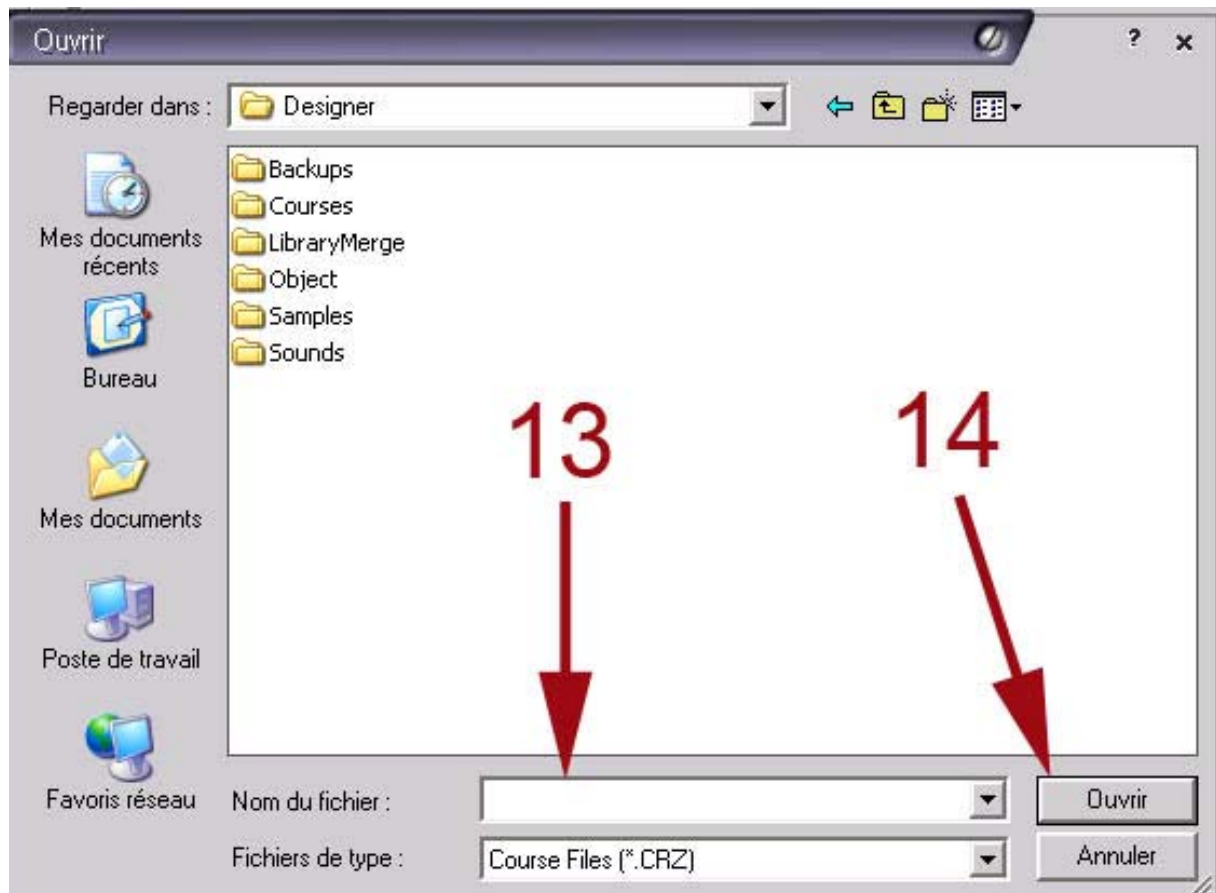


- 11) Click on « File »
- 12) Click on « Import from Course... »



13) In the new window, choose your .crz file

14) Open

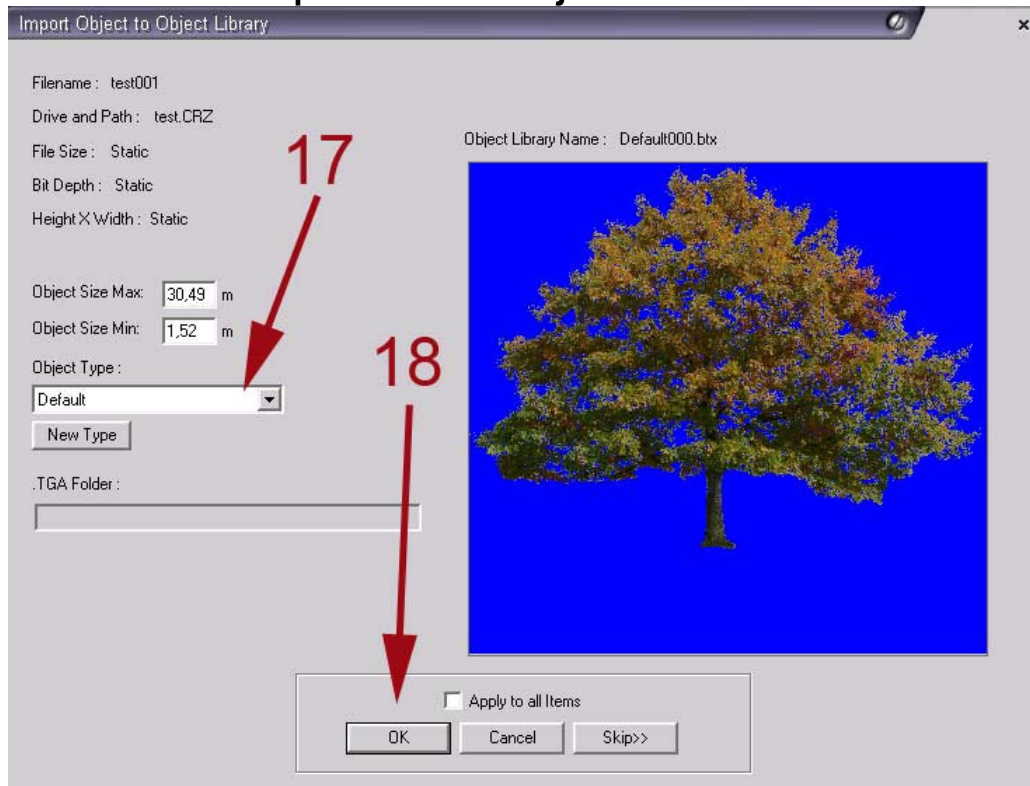


15) In the new window, you will see the number of new objects

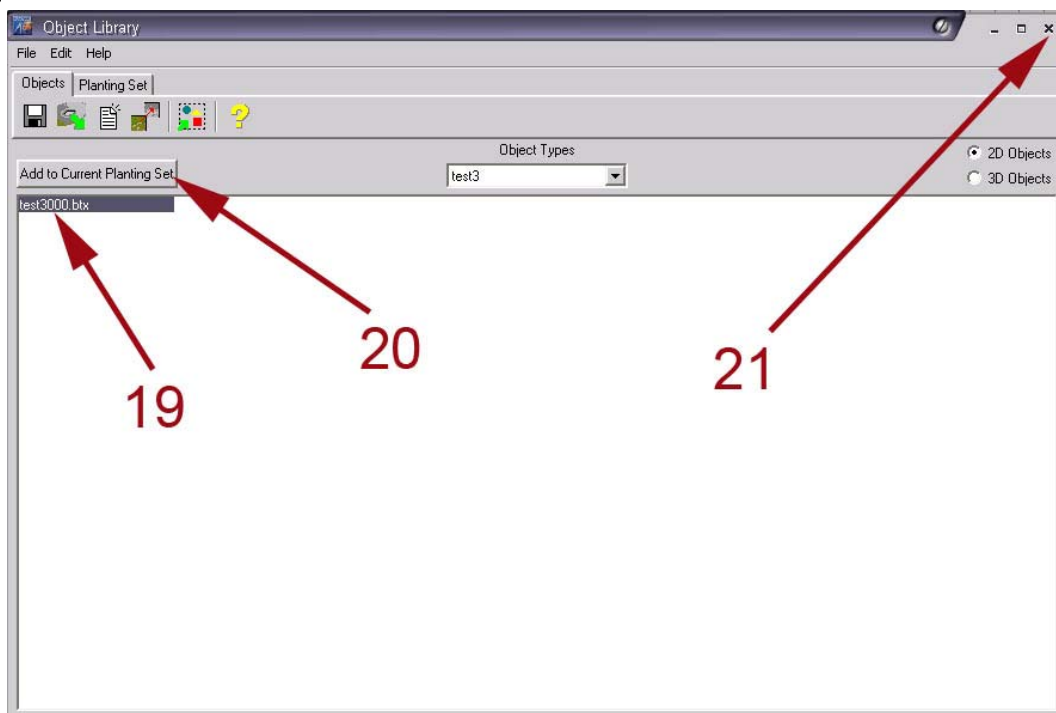
16) OK



- 17) Choose your object type (created before)
- 18) Click « OK » for each objects or « Skip » if you don't want to import this object



- 19) Select your new object(s)
- 20) Click on « Add to Current Planting Set »
- 21) Close this window



22) In the new window, click on « Yes »
Now you can use these new objects



Good luck & have fun

François CRISTALLO

CIAO, LeWAW

